

# Office to let

## Unirii View

Bucharest, Sector 3, 6-8 Corneliu Coposu St.

### Building information

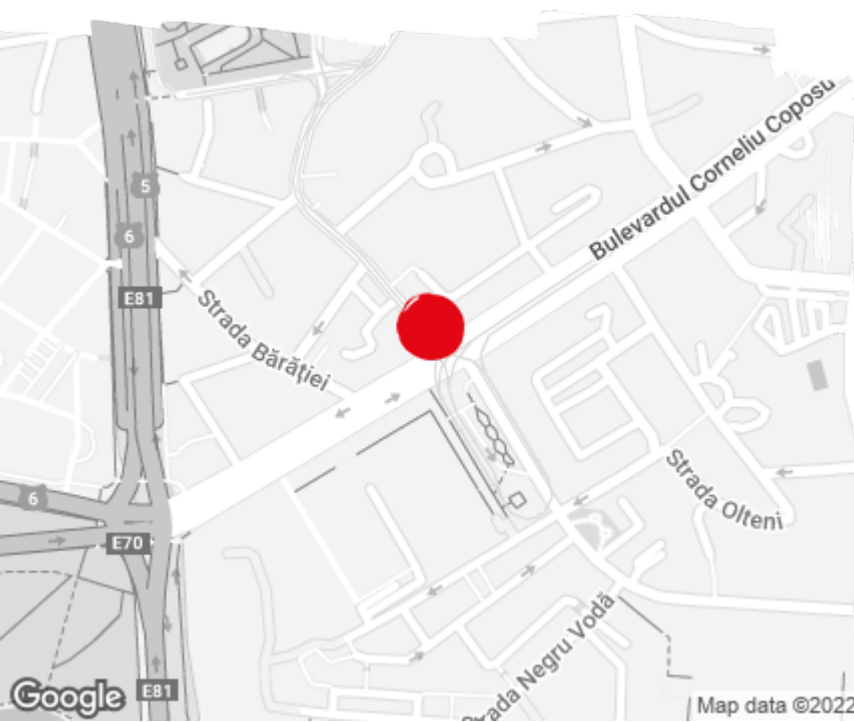
Building status	Existing
Year of construction	2018
Parking ratio	1 / 100 sq m
Total building area	17 941 sq m

### Commercial terms

Office space*	after login *
Parking	after login *
Service charge*	after login *
Minimum lease term	after login *
Availability	after login *

\* Asking terms for m<sup>2</sup>/month

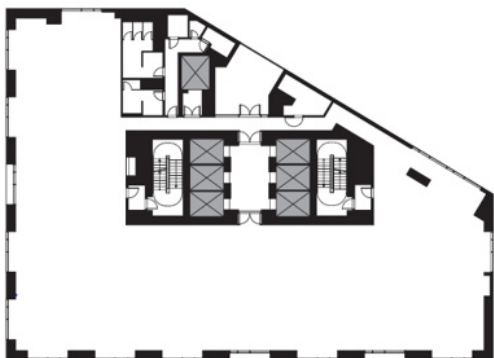
### Location



### Available space

Building completely leased

Typical floor plan



Public transport

Metro: M1, M2, M3

Bus: 116, 117, 312, 313, 323, 605, 385

Tram: 14, 40, 55, 16

Contact



+40 21 302 3400

More information